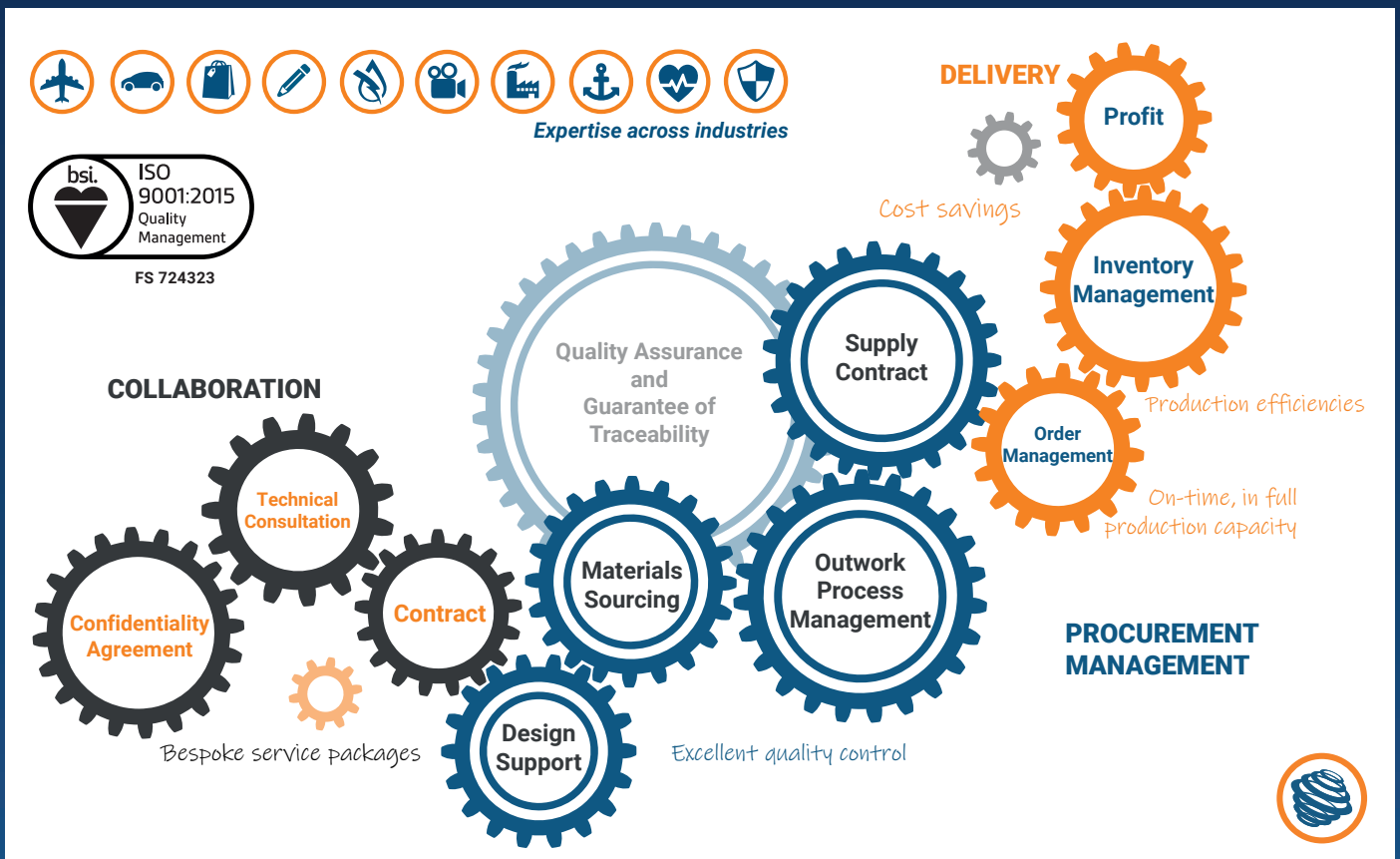


Quality assurance, supply chain management and manufacturing solutions to lower production costs

Contract manufacturing of component parts with CNC precision engineering



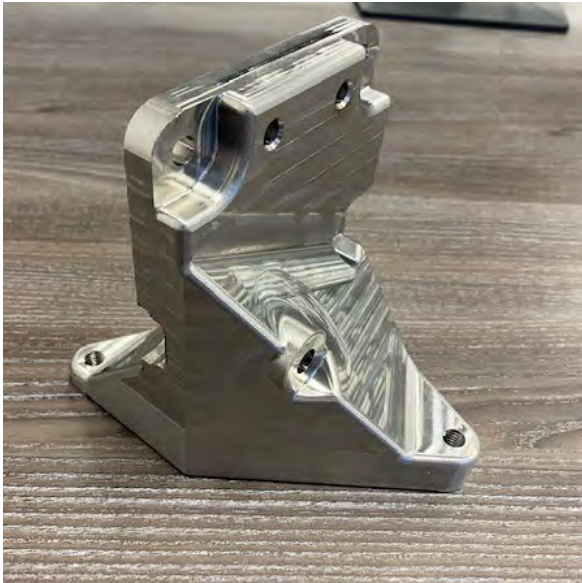
Contract manufacturing is a proven method of improving supply chain efficiencies and managing quality. We take pride in our abilities to manage the production supply chain of component parts in line with your project needs, so you don't have to. The end result is increased profit, quality assurance, traceability and timely part production schedules.





FS 724323

Assuring quality in every batch



Item: Engine bracket
Material: Stainless steel
Tolerance: +/- 0.1mm
Lead time: 2 weeks
Estimated cost: £1200



Item: Oil filler neck
Material: Aluminium 6082 T6
Tolerance: +/- 0.1mm
Lead time: 2 - 3 weeks
Estimated cost: £300



Item: Engine parts
Material: Mild steel (chemically blacked) and Aluminium 6082 T6
Tolerance: +/- 0.1mm
Lead time: 3 weeks **Estimated cost:** £4000



Item: Pump pulley
Material: Mild steel
Tolerance: +/- 0.02mm
Lead time: 3 days
Estimated cost: £900